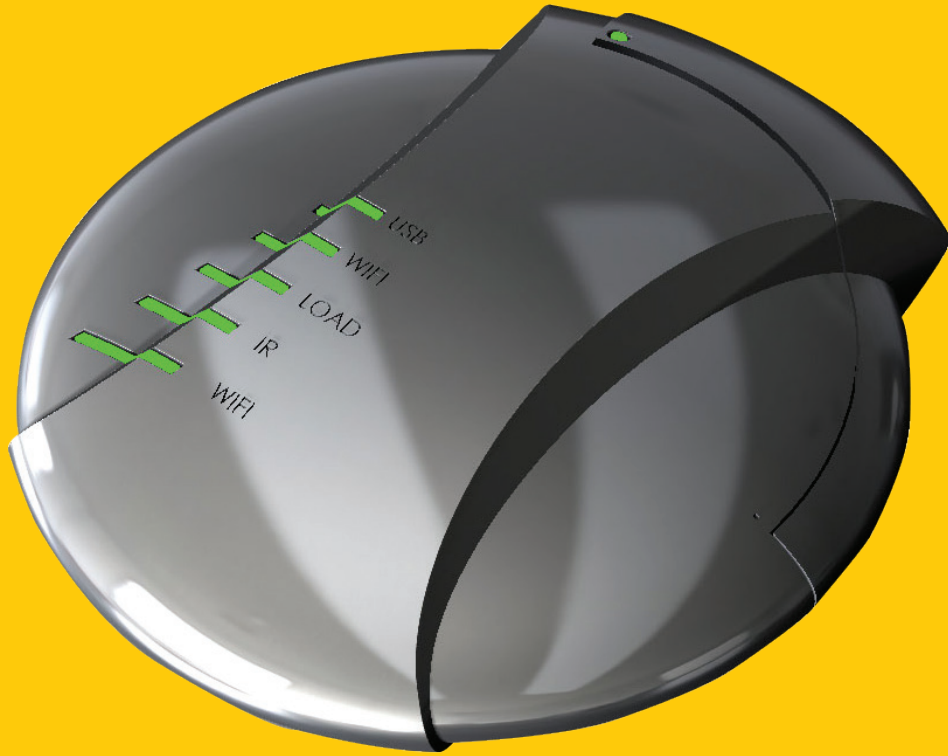




Smart solutions for any home



WANDERFUL™ HUB

The Wanderfull™ Hub Combined with the TouchWand Cloud Support – The Easy & Affordable Way to Control Any Smart Home, with One Single App.

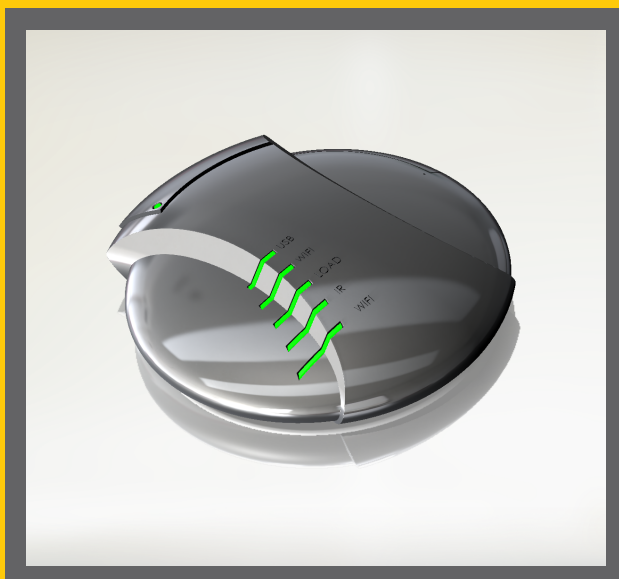
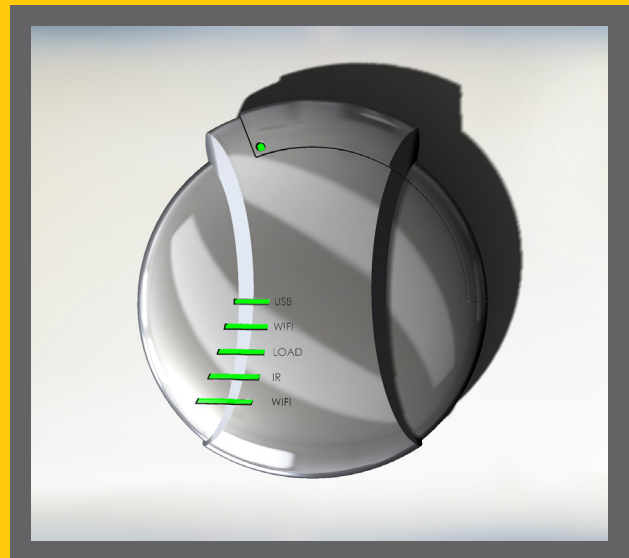
The best accessibility solution for smart control of any home, office or hotel

The Wanderfull™ Hub provides easy yet powerful single-app control of smart switches, smart shutters, temperature control, hot water heaters, smart locks, smart outlets, smart thermostats, and other home automation and security devices (sold separately) that can be viewed and controlled remotely from anywhere. Regular time-based custom scenarios and sequences can be created individually thanks to multi-level infrastructure support. Smartphones, tablets or computers can be easily used for setup and control.

The combined use of the Wanderfull™ Hub with connected TouchWand products, or any other compatible Z-Wave products, provides homes and small businesses security, energy savings and peace of mind, along with time-saving cloud-generated advice based on daily usage.

Full compatibility with other TouchWand and Z-Wave products enables the Wanderfull™ Hub to collect data on the status of home devices and study customized preferences in order to maximize efficient climate control with the energy saving optimization option.

The Wanderfull™ Hub is compatible with most major Z-Wave brands, BLE, KNX and Wi-Fi wireless connections. All connections are highly secure, under one cloud service.

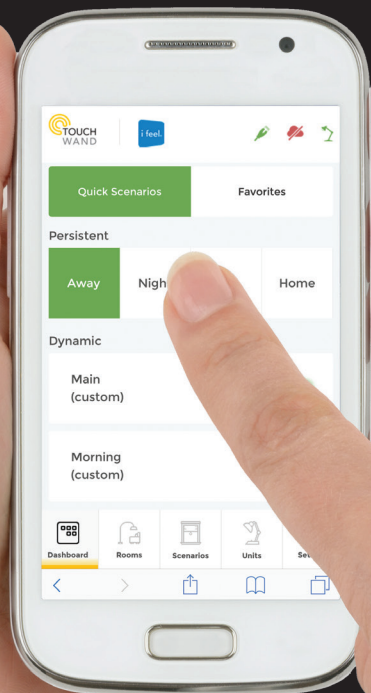


TouchWand WANDERFULL™ HUB for builders, integrators & tech professionals

The TouchWand Wanderfull™ Hub offers you and your customers state-of-the-art capabilities beyond any regular home. TouchWand products create a fully accessible home with truly smart devices that learn and offer help and support, both automated and human.

The TouchWand cloud covers everything a comprehensive smart home needs, including analytics system, notification system, routine technical updates, on-going environment learning, an easy to use GUI system, built-in energy saving system, multilingual human support with access to live TouchWand data, In-wall modules and wall controller touch panels, and the ability to receive advanced customized push notifications on mobile devices.

The Wanderfull™ Hub allows mixing and matching of smart products from other manufacturers so customers are not limited to just one brand of door lock, camera or thermostat. The Wanderfull™ Hub is compatible with most brands of home automation devices using Wi-Fi communication and offers guaranteed compatibility with most certified Z-Wave & KNX devices.



CONTROLLER SPEC

- Connect the HUB to the power supply and start working
- One app to view and control all your certified Z-Wave devices using any smartphone or tablet when connected to the internet anywhere in the world
- Saving money on energy automatically
- Compatible with most Z-Wave devices
- Wireless communication makes installation a breeze in any home, office or hotel
- Supports multi-unit system scenarios based on Z-Wave, KNX, Wi-Fi and BLE
- Easy, intuitive setup with a simple check box format; adding devices at a later stage is seamless and easy with preconfigured settings for most devices
- Unique session with TouchWand switches for accurate shutter level and power consumption data
- An app that learns customers' preferences and assists with automated activities based on a cloud application combined with human technical support offering local and domestic services with a smart yet easy to understand and operate alert system
- Includes Christian, Muslim and Jewish calendars for accurate time-based scenarios
- Full compatibility with LEED and EDGE green building standards

CONTROLLER HARDWARE

- CPU: ARM Cortex A7
- Flash Memory: EMMC 4GB
- RAM: 512MB
- 2 USB Ports: Host & OTG
- Ethernet Port
- Wireless: Z-Wave Plus™, 802.11 b/g/n Wi-Fi, BLE-4
- Dimensions: 170x180x43 mm

CERTIFICATIONS & STANDARDS

- CE
- LEED
- Z-Wave Plus™

Power Supply
Input: DC 12V

